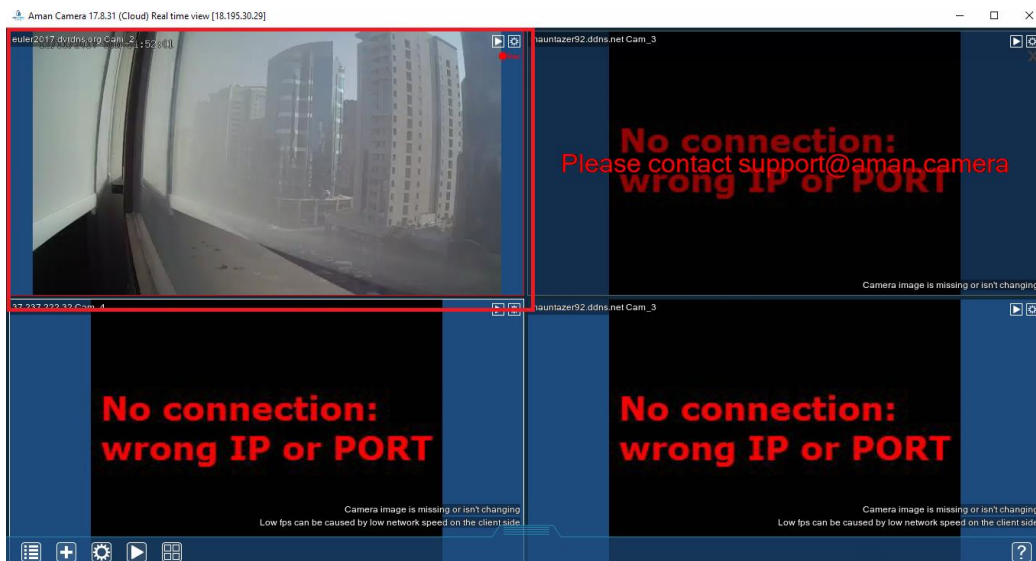


PLAYBACK AND ARCHIVE SETTINGS

Playback and Archives

In this setting, end-users can playback videos and download archives directly from the software. You can also download these archives in web browser.

1. Select the camera you want to download the archives from.

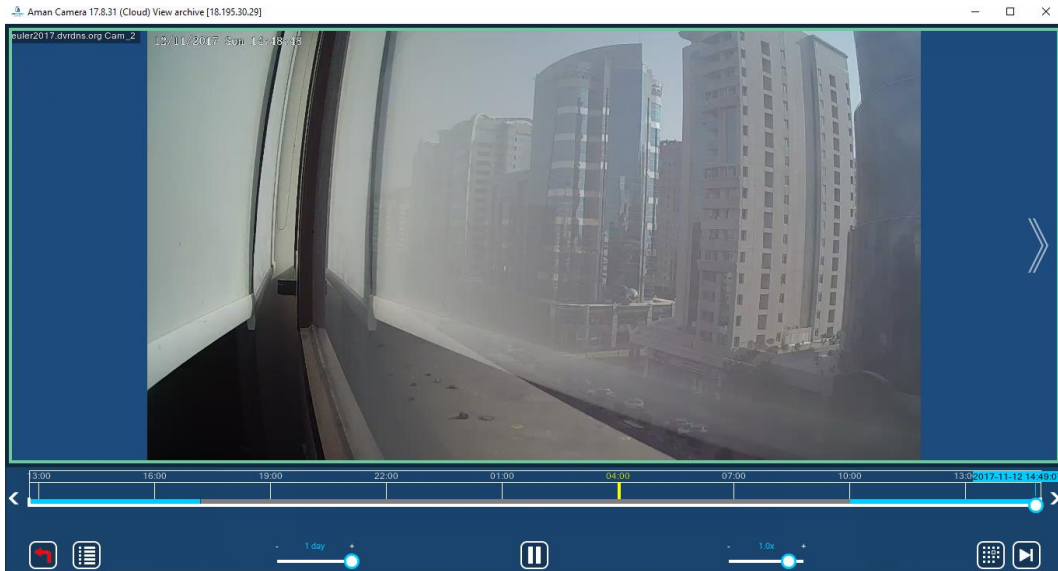


2. Go to Playback and Archives settings.



I. PLAYBACK

- a. This is the Playback settings. Here, you can view previously recorded videos. Please take note that we transfer old videos every week. To access old videos, send us an email at support@aman.camera and we will send all videos recorded.



- b. You can select the time and date you want to playback from the calendar.

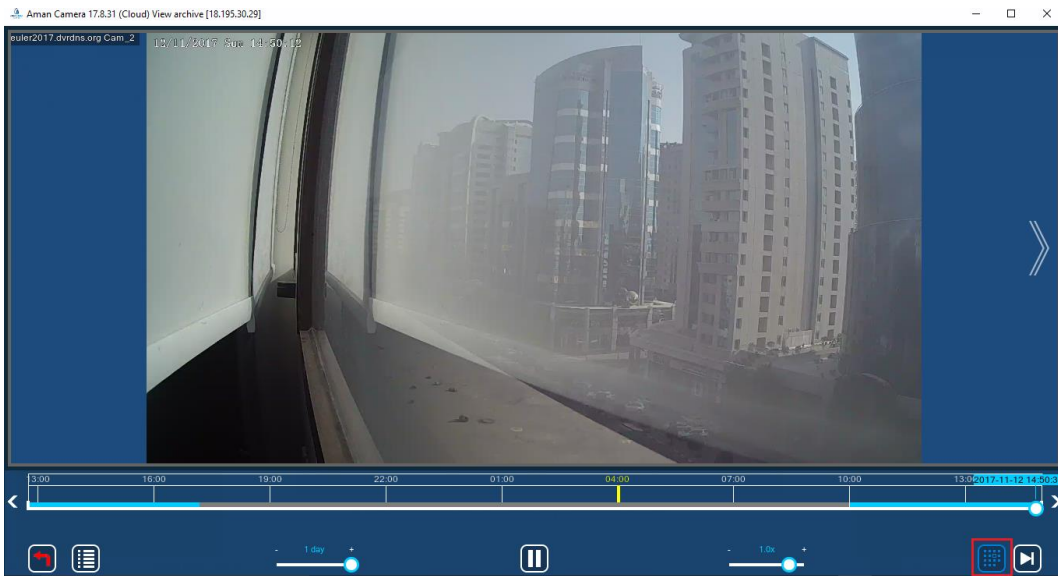


Figure I.b.1 Select calendar menu

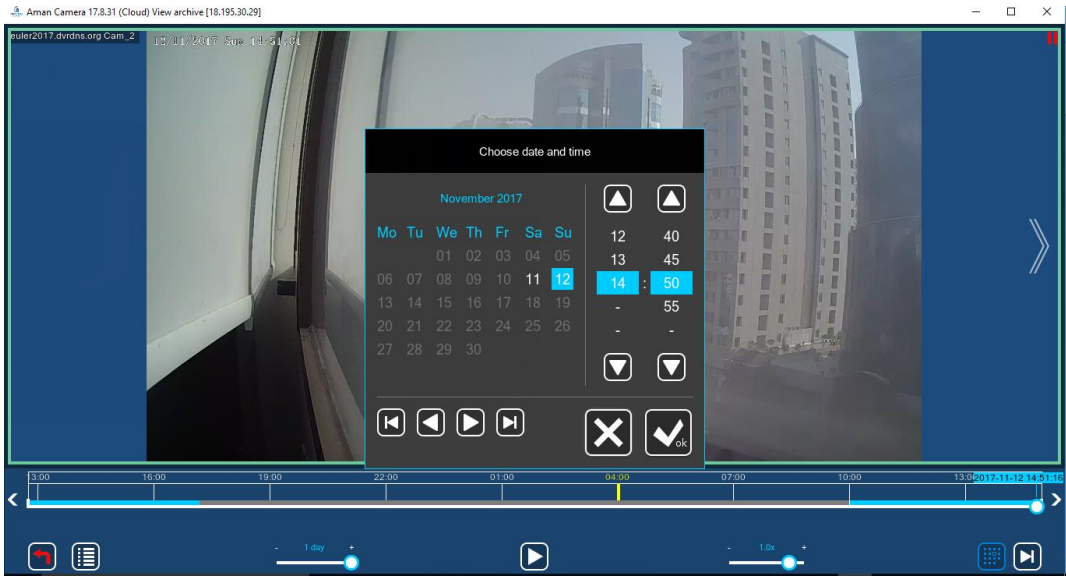
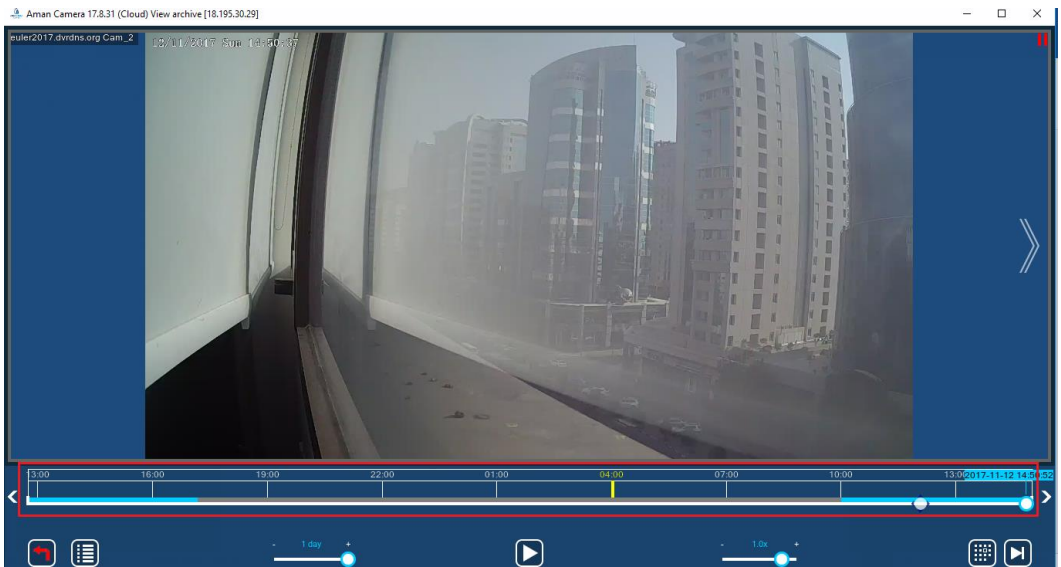


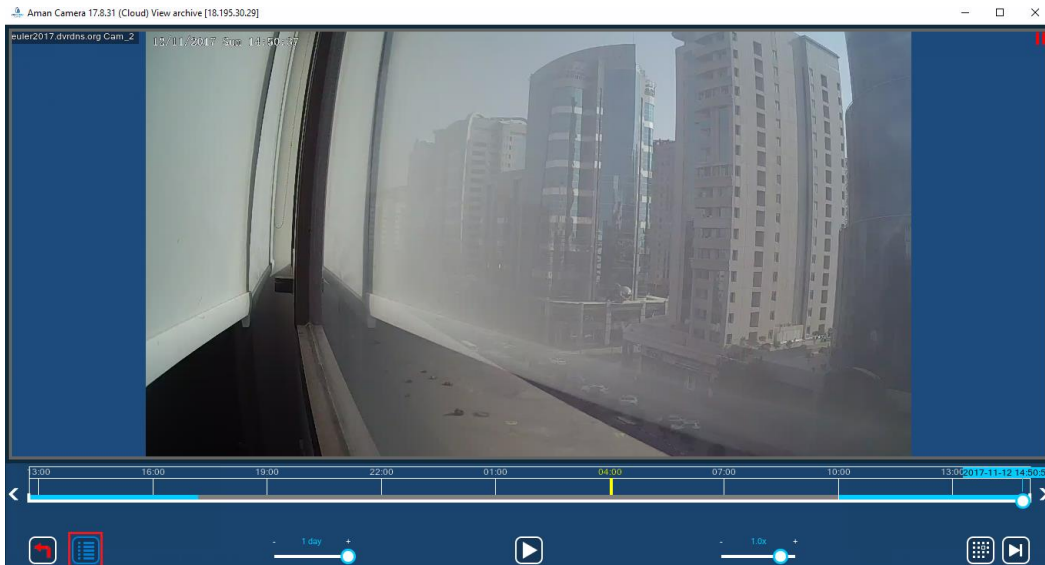
Figure I.b.2 Select the date and time

c. Or select using the timeline setting.

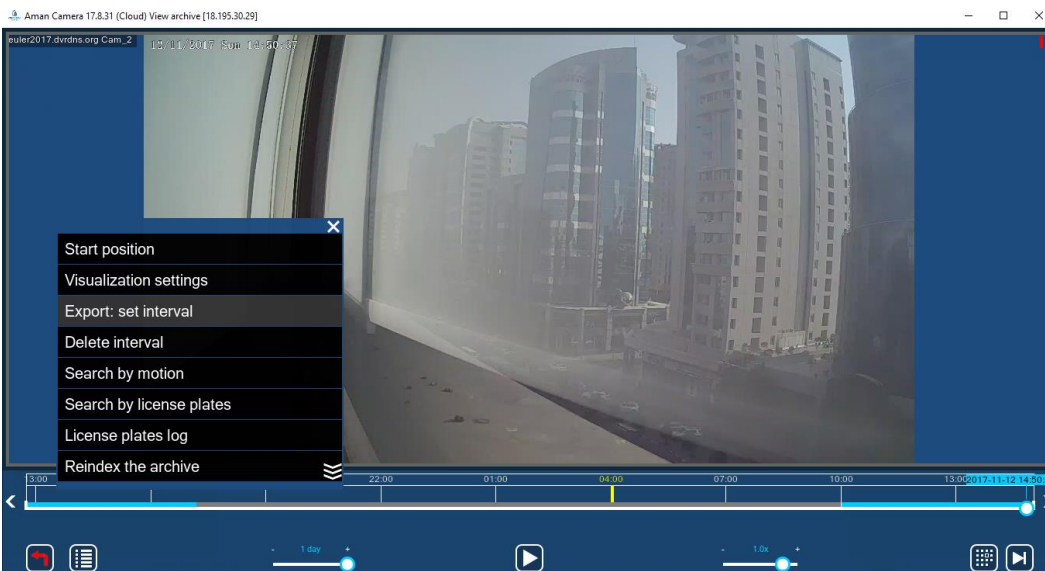


II. ARCHIVE SETTING

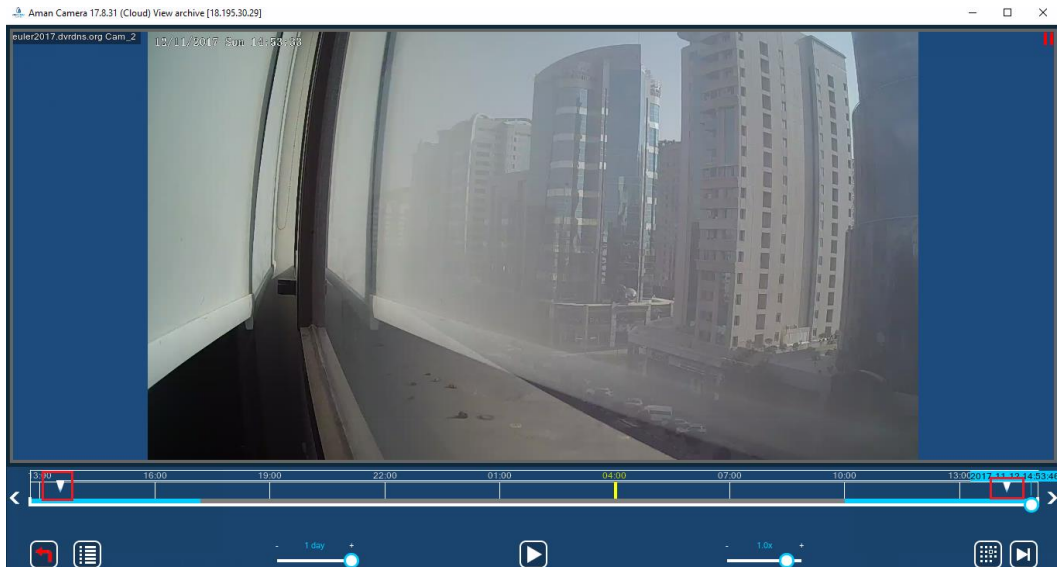
a. To open archive, select Playback and Archive menu.



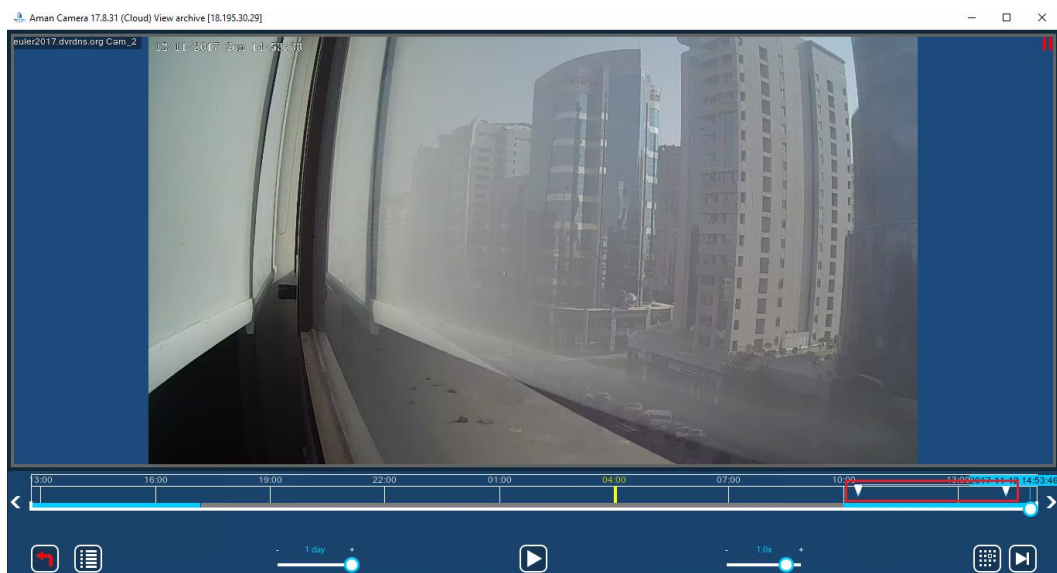
b. Select "Export: Select Interval"



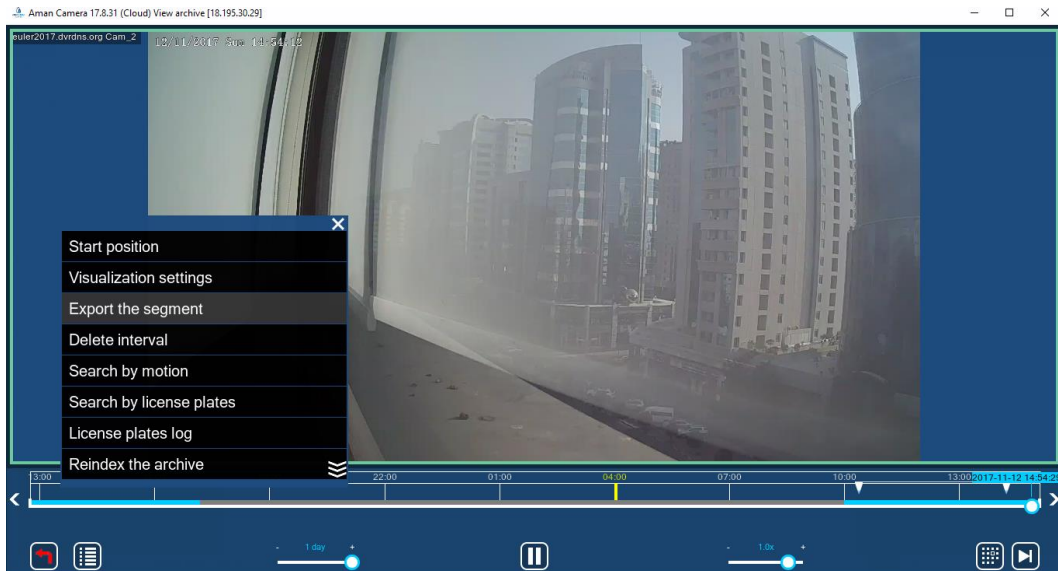
- c. You will notice 2 arrows pointed in the timeline. The first one is the start date and the second one is the end date.



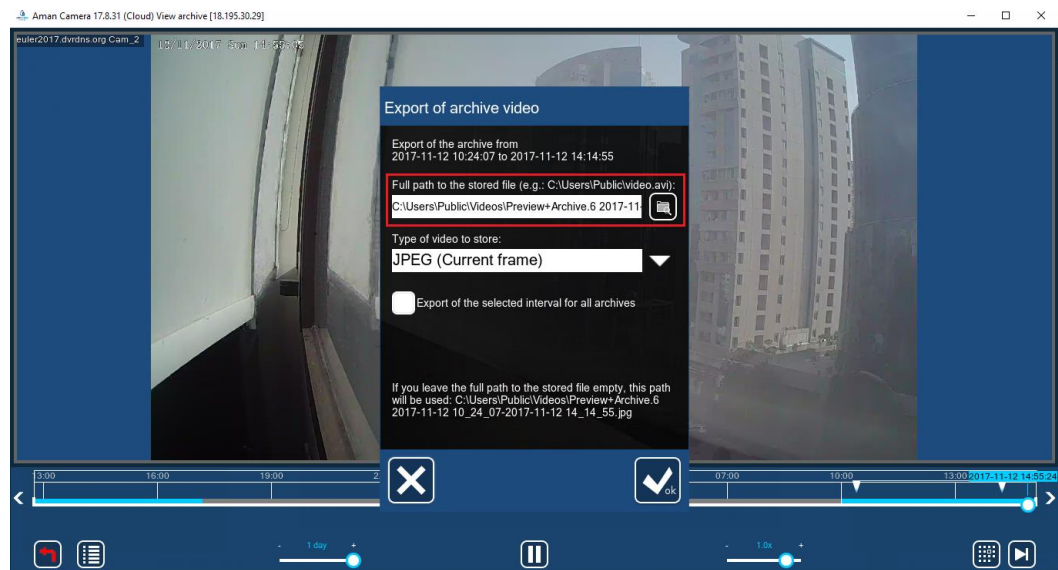
- d. Simply drag the arrows with your preferred start and end date.



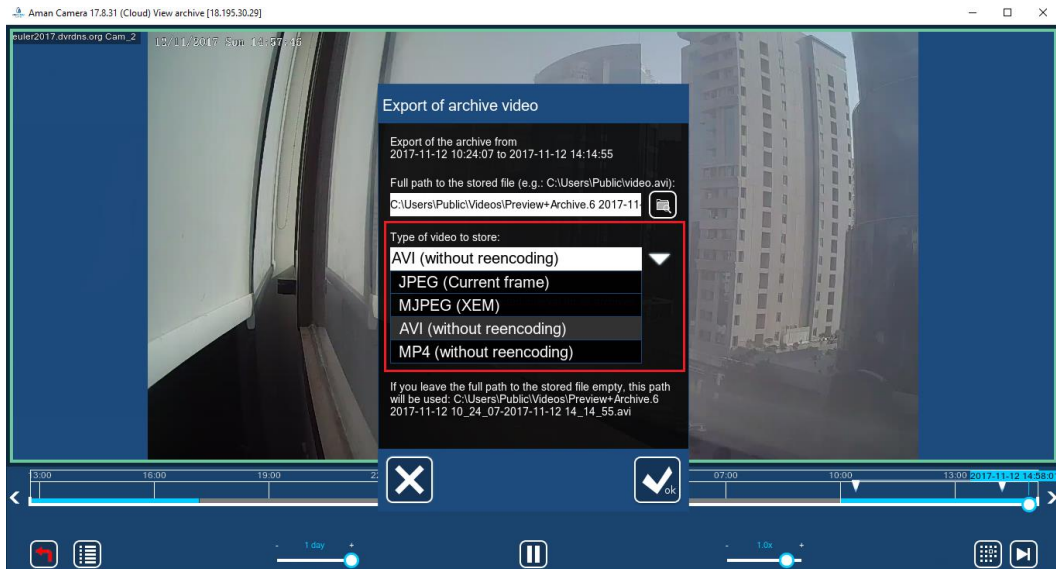
e. Once time is set, go to Playback and Archives menu and select "Export the Segment"



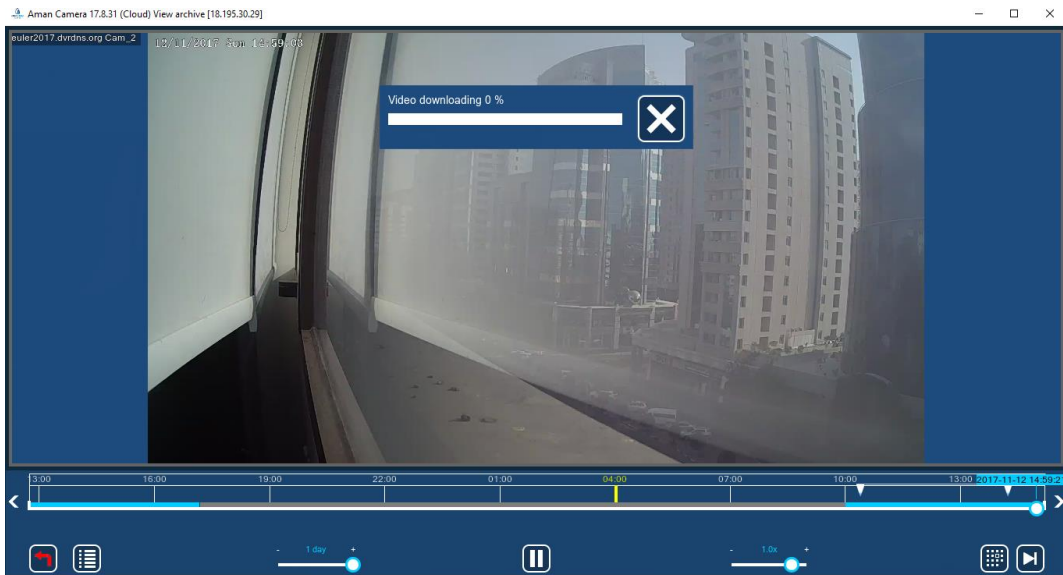
f. Select where the video will be stored. It's default path is
C:\Users\Public\Videos\Preview+Archive.6 2017-11-12 10_24_07-2017-11-12
14_14_55.avi



g. Select the type of video to store.



h. Then click "OK". Your video will start downloading.



Please contact support@aman.camera for more help.