

# MODULE BASICS

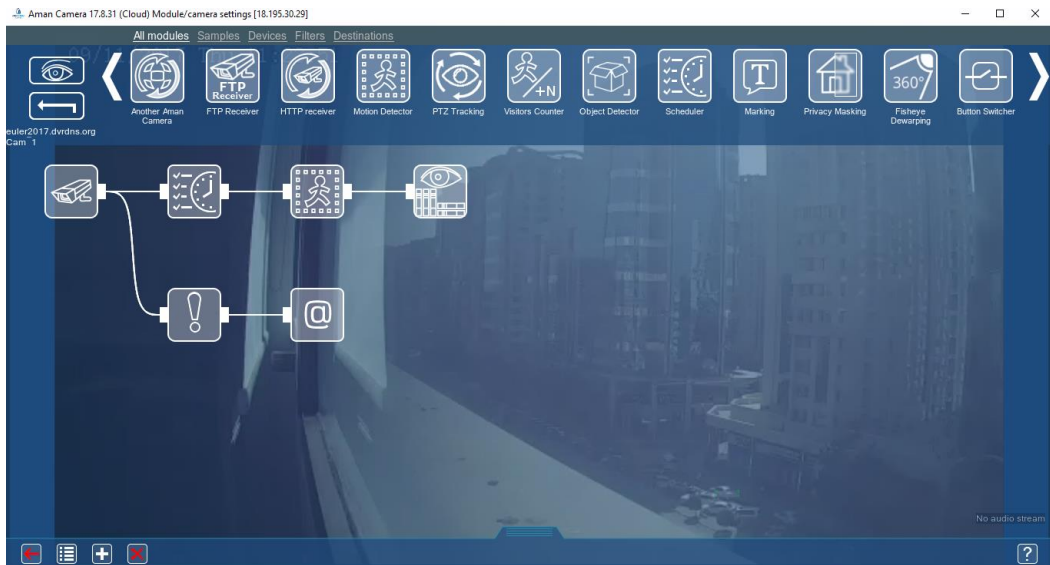
## Module Workspace

Modules are camera features the end-users can add to utilize the function of Aman Camera in day-to-day monitoring.

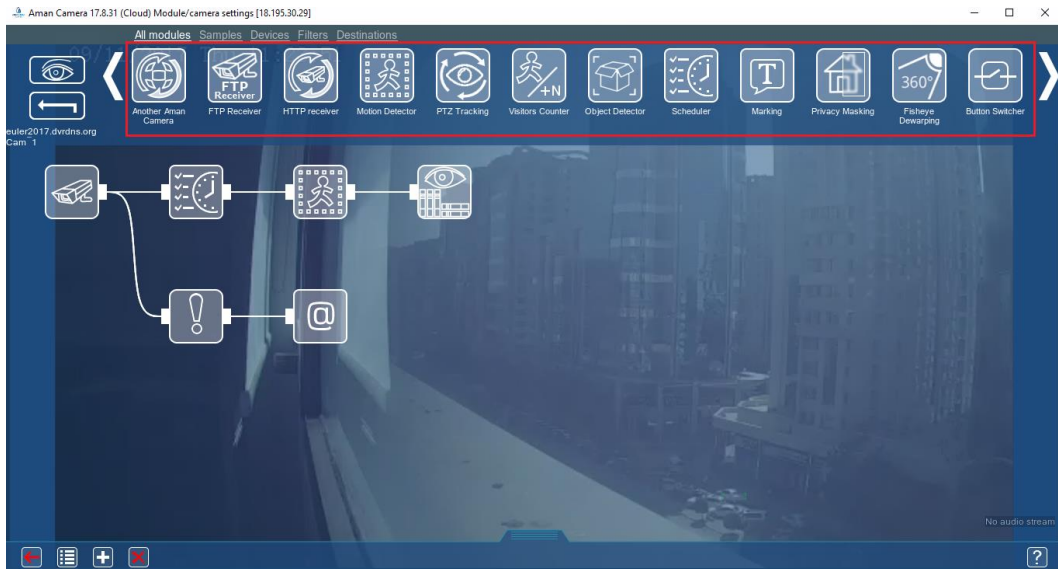
1. Open Aman Camera
2. In the home screen, select “Camera settings” option.



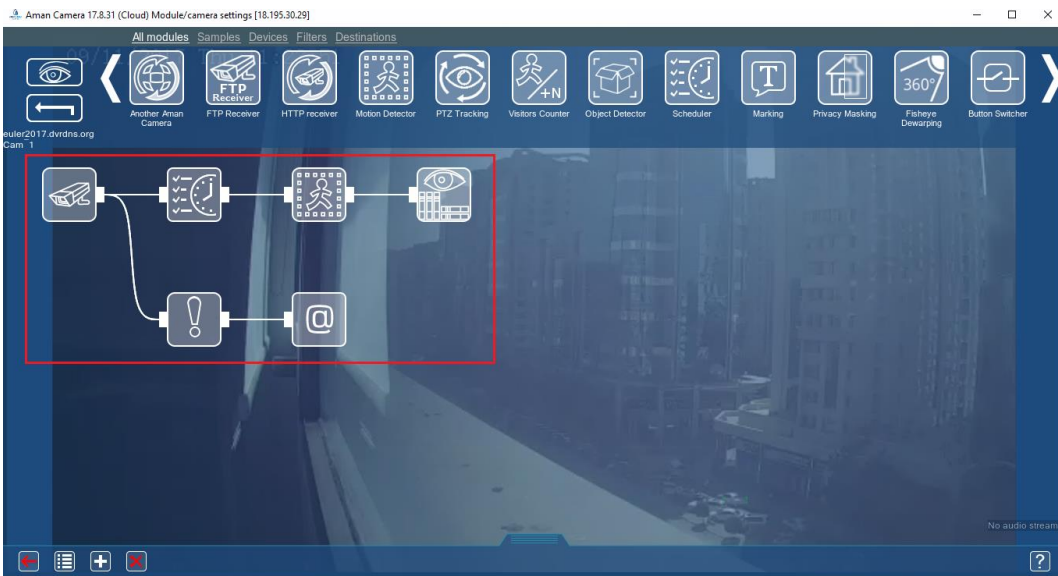
3. Camera settings work screen will appear.



4. In this section, end-users will find all modules available in their account.



5. This is the module workspace. This is where end-users will add modules they want for the camera. All modules connected in the right connector will be activated by the left connector.

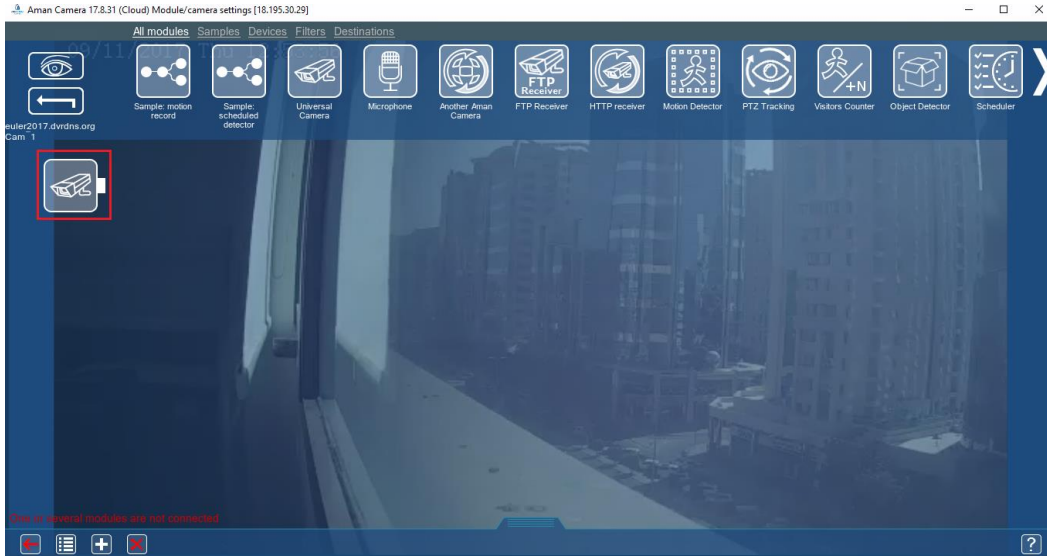


We have 3 components in module workspace section.

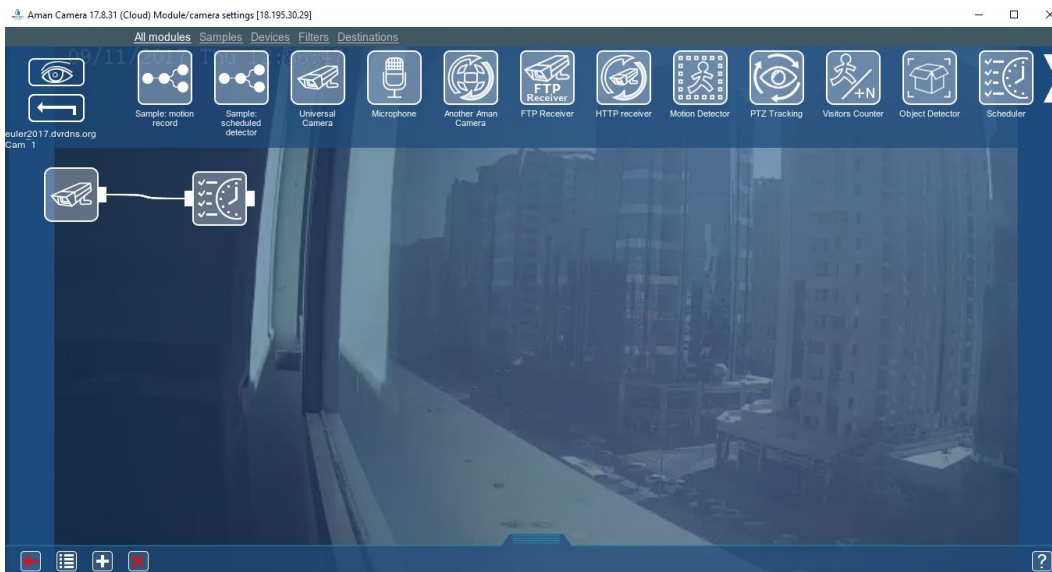
1. **Module** – this is the feature that end-users want for the camera
2. **Chain** – this is the link that connects 2 modules.
3. **Connector** – each module has 2 connectors, left and right connectors. Chains are linked to the connectors.

Here's an example how the module screen works:

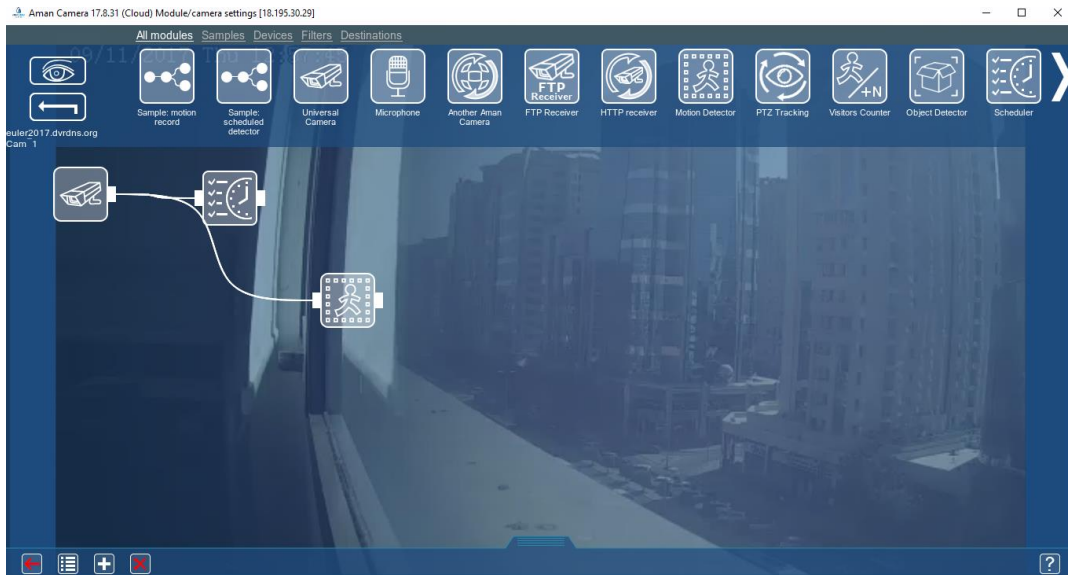
- a. Let's start with single module which is Universal Camera.



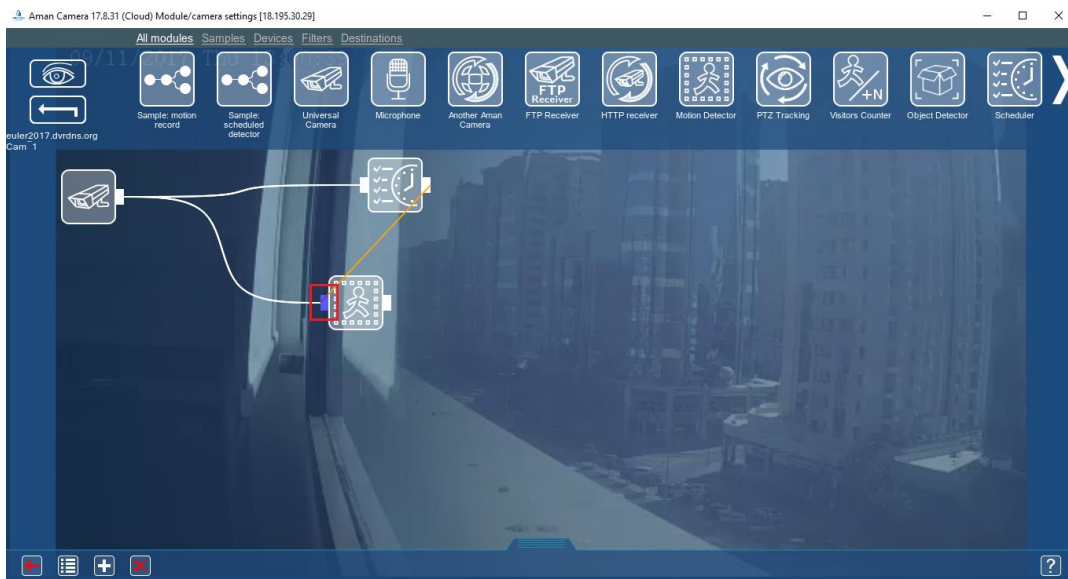
- b. To add scheduler for this camera, simply drag Scheduler module and connect it to Universal Camera module



- c. Now, we want a motion detector for this camera. Connect Motion Detector module to Scheduler.

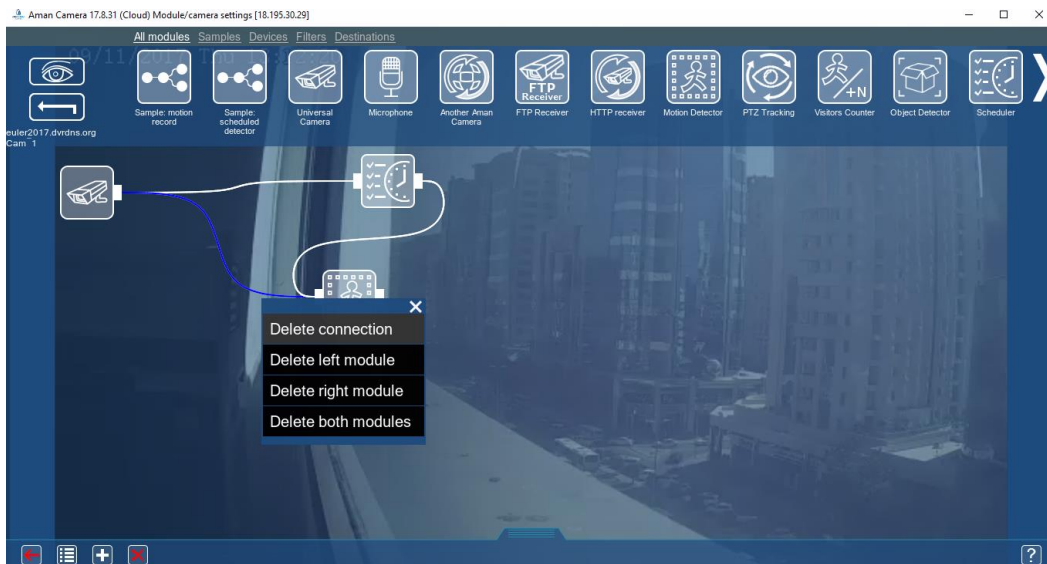


But instead of connecting the chain to Scheduler module, it connected to Universal Camera module. To change chain connection, click and hold the left connector of Motion Detector module and connect it to the right connector of Scheduler module.

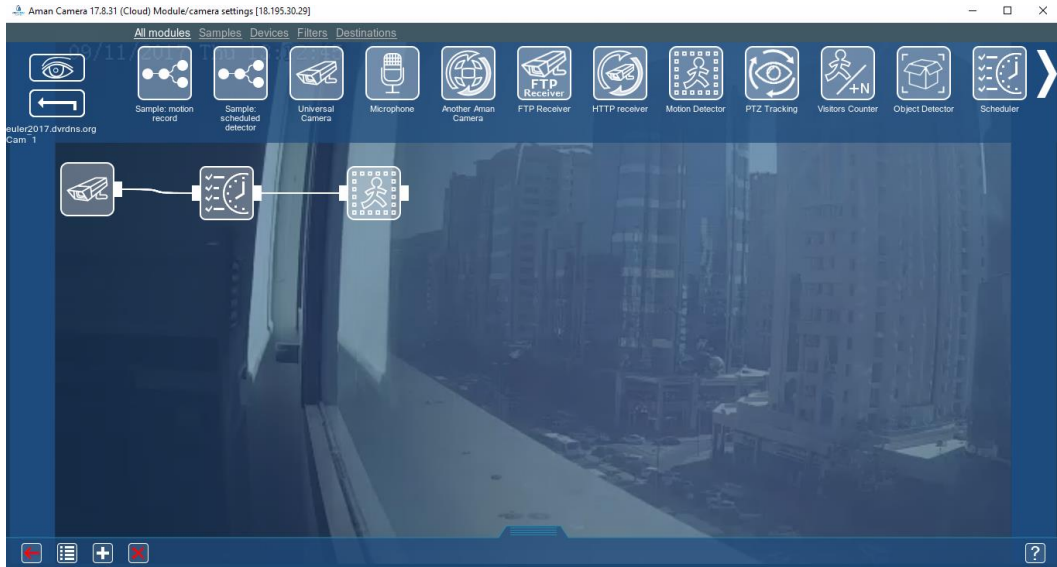




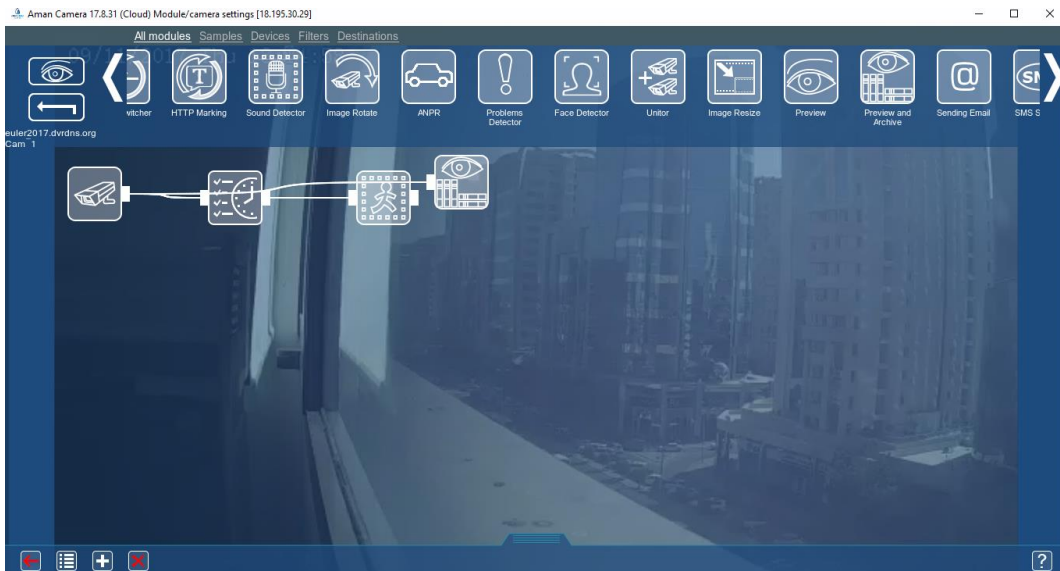
- d. Scheduler and Motion Detector modules are now connected. Now, we want to delete the connection between Motion Detector and Universal Camera module. To do that, simply right click the chain of the two modules and click "Delete Connection."







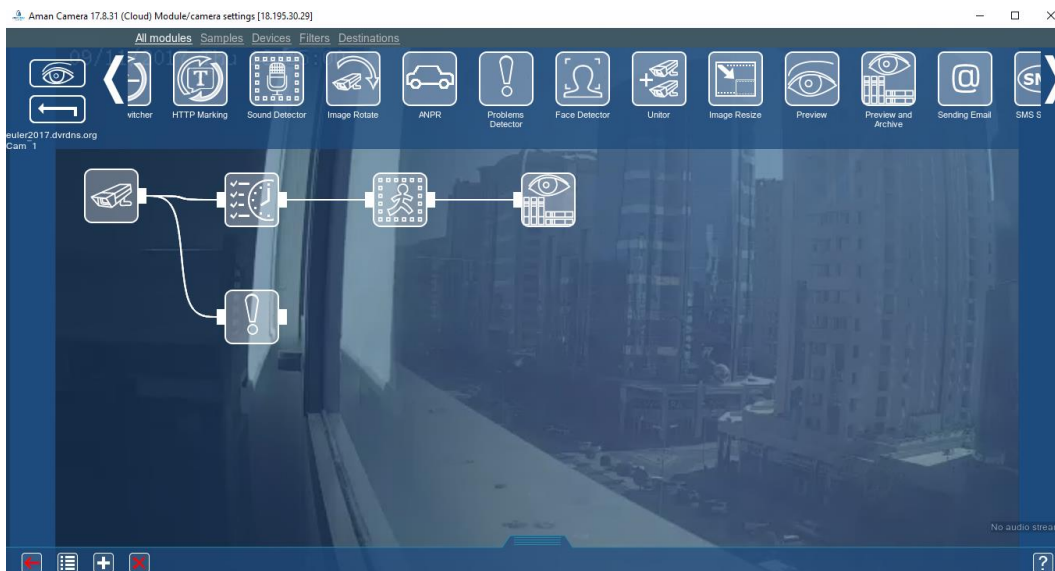
- e. Because end-users want every motion to be recorded, we will add Preview and Archive module to the right connector of Motion Detector module. In this matter, all motions captured in the camera will activate the recording feature of Aman Camera.



The Preview and Archive module is connected again to the Universal Camera module. Do the same steps we did in Motion Detector module.



- f. End-users want to detect if there are problems with their cameras. To do that, we need Problems Detector module. Drag the module and connect it to the Universal Camera module.



- g. End-users want to be notified if there are problems with their cameras. We will add Sending Email module that will notify end-users regarding the errors detected. Drag the Sending Email module and connect it to the right connector of Problems Detector module.

