

BASICS OF AMAN CAMERA

User Interface

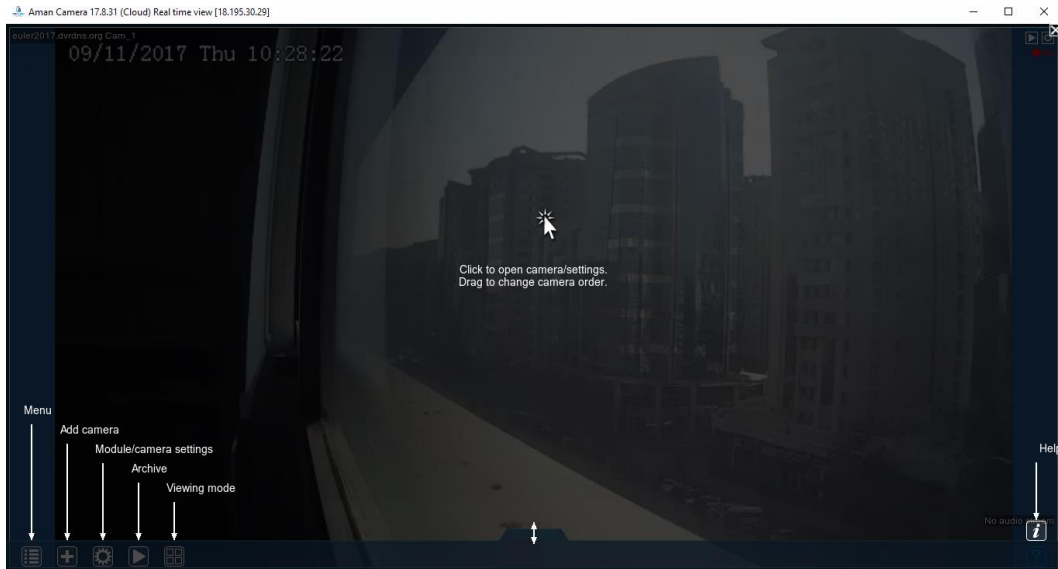
Aman Camera is a cloud-based security surveillance viewing software that helps end-users monitor and record videos that are accessible from anywhere and anytime.

I. Home screen

Main screen where you can view cameras.



Figure I.1 Select “Help” option.



You can see all settings in the bottom panel of the home screen. We have the Main Menu, Add Cameras, Camera Settings, Archive, and Viewing Mode.

II. Main Menu

Main menu shows the basic of Aman Camera. From connecting to the server up to language selection for the software.



III. Add Camera

There are 2 options for adding a camera.



1. By IP address of camera



Figure II.1.a Select “Add camera” option

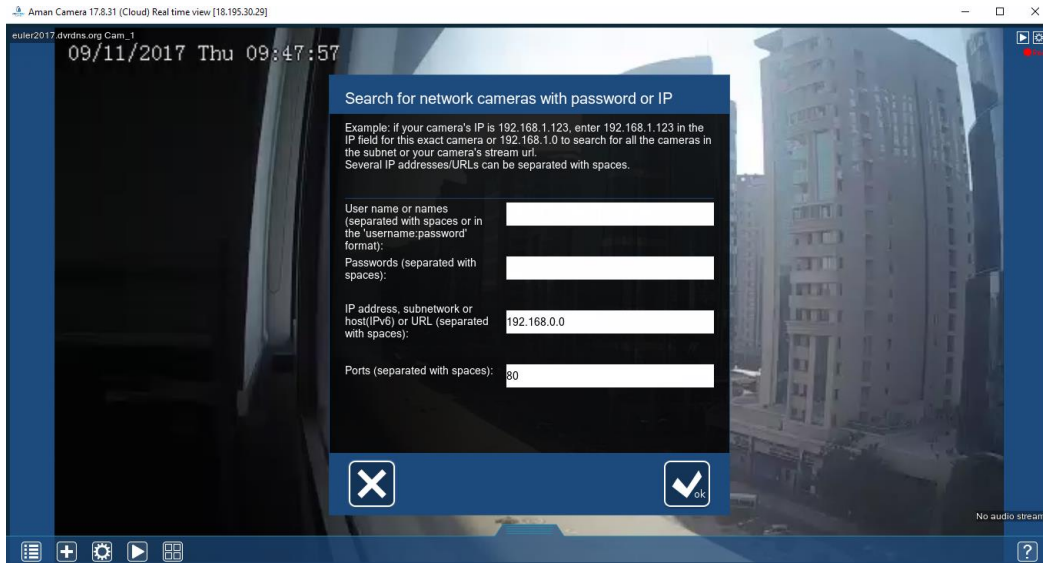


Figure II.1.b A pop-up window for settings will appear.

To learn more about adding cameras by IP address, check [Setting up camera – IP Address](#).

2. By DDNS

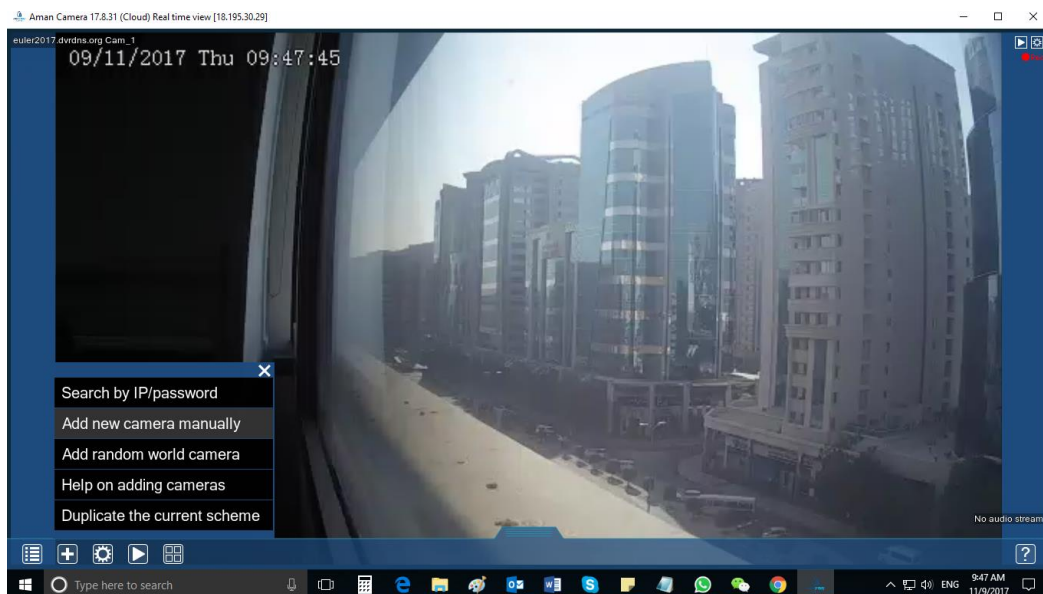


Figure II.2.a Select "Add new camera manually" option

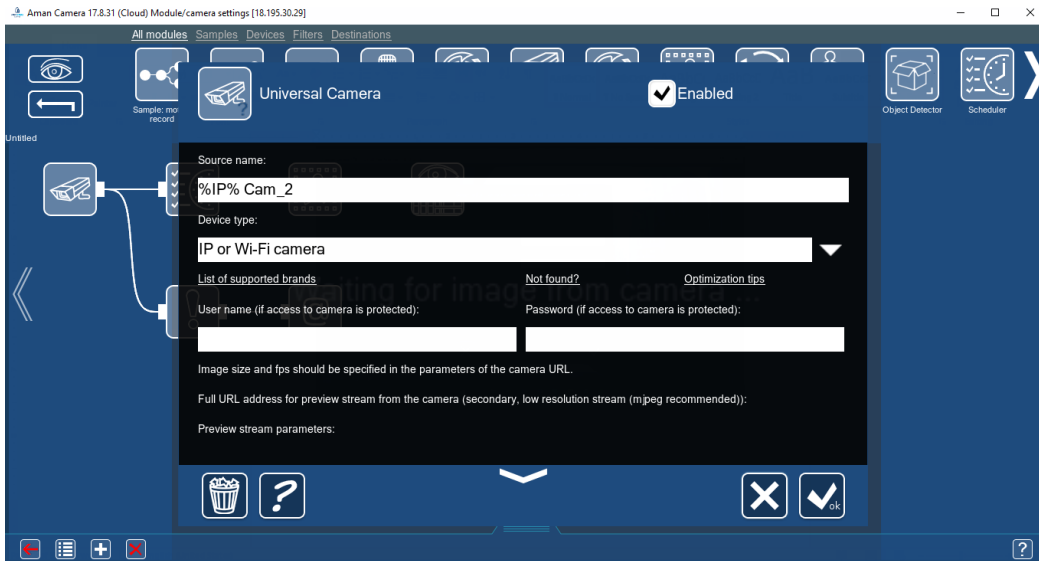


Figure II.2.b A pop-up window of settings will appear.

To learn more about adding cameras manually, go to [Adding Camera – DDNS and RTSP tutorial/manual](#).

IV. Camera Settings

To fully utilize the software, Aman Camera offers wide range of camera functions for better monitoring. End-users can add modules for motion detection, schedule recording, and many more.

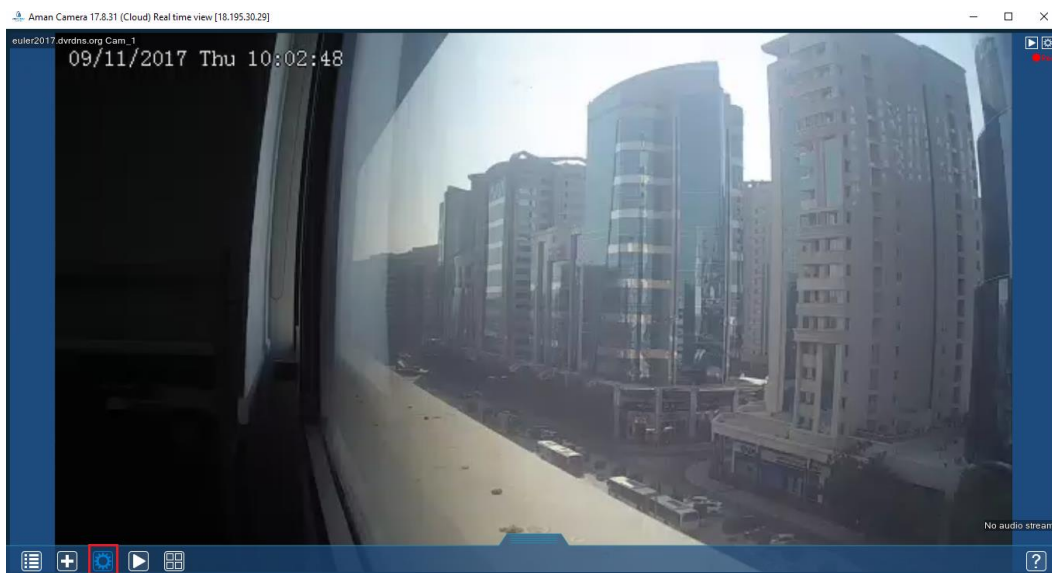


Figure III.1. Select "Settings" option in the bottom panel

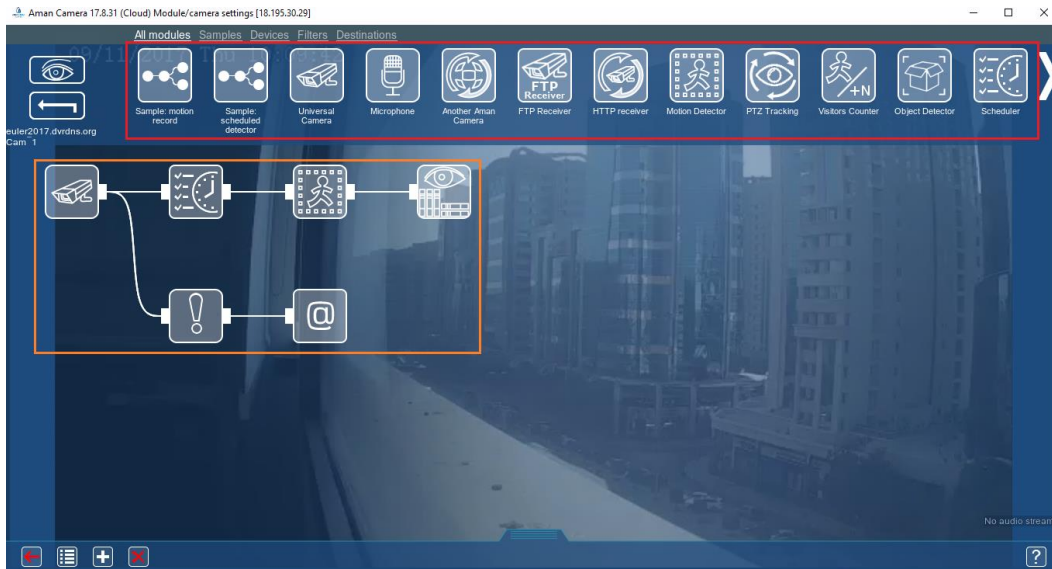


Figure III.2. Settings screen. Red box, modules available. Orange box, current modules in use.

To learn more about camera settings, check “Module basics” manual/video.

V. Playback and Archives

End-users can playback videos recorded for the day. They can also download recorded videos from here.

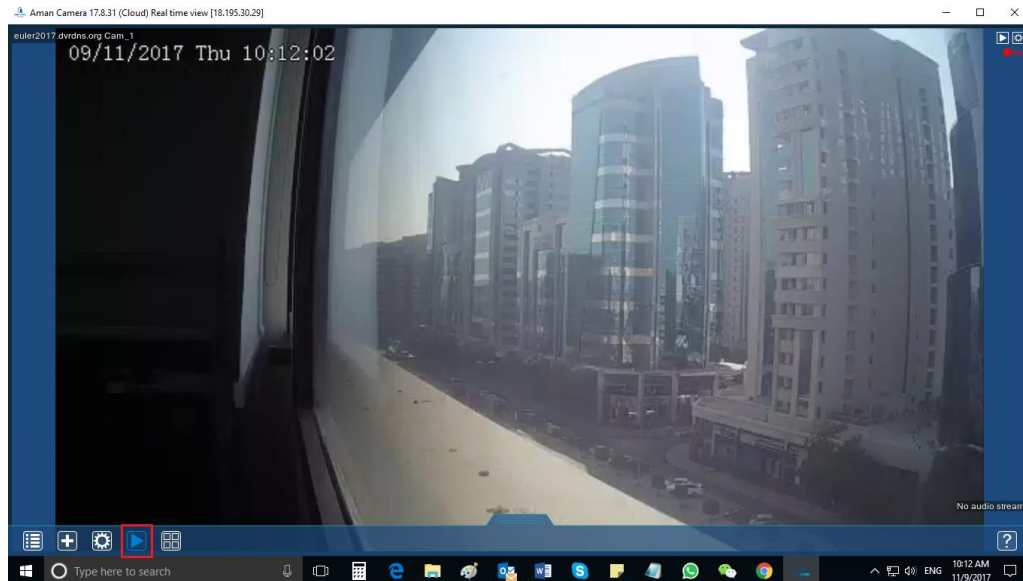


Figure IV.1 Select “Playback and Archives” option

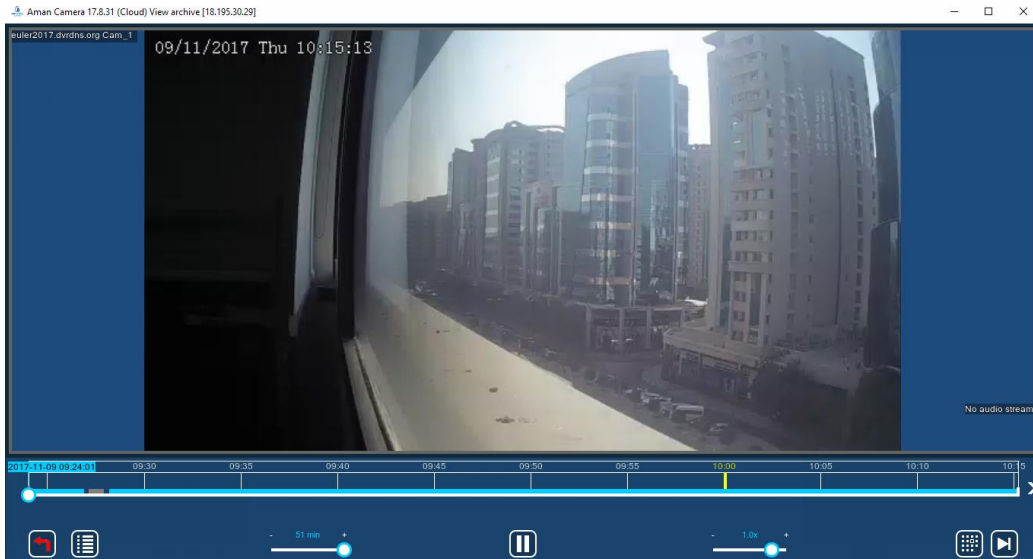


Figure IV.2 Playback and Archives settings will open

To learn more about Playback and Archives section, check "Playback and Archive settings" manual/video.

VI. Viewing Settings

In this option, end-users can select how many cameras they can view in the home screen. They can manage the layouts, make the grid larger, open the camera in full screen mode, window settings, etc.



Figure V.1. Select "Grid settings" option.

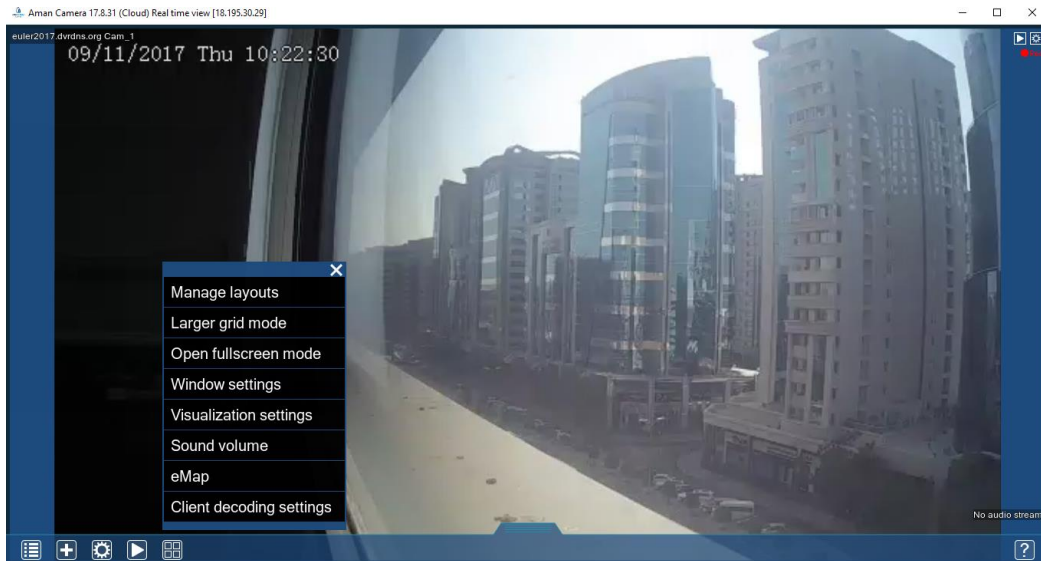


Figure V.2 View settings menu window will appear.