

ADDING CAMERAS

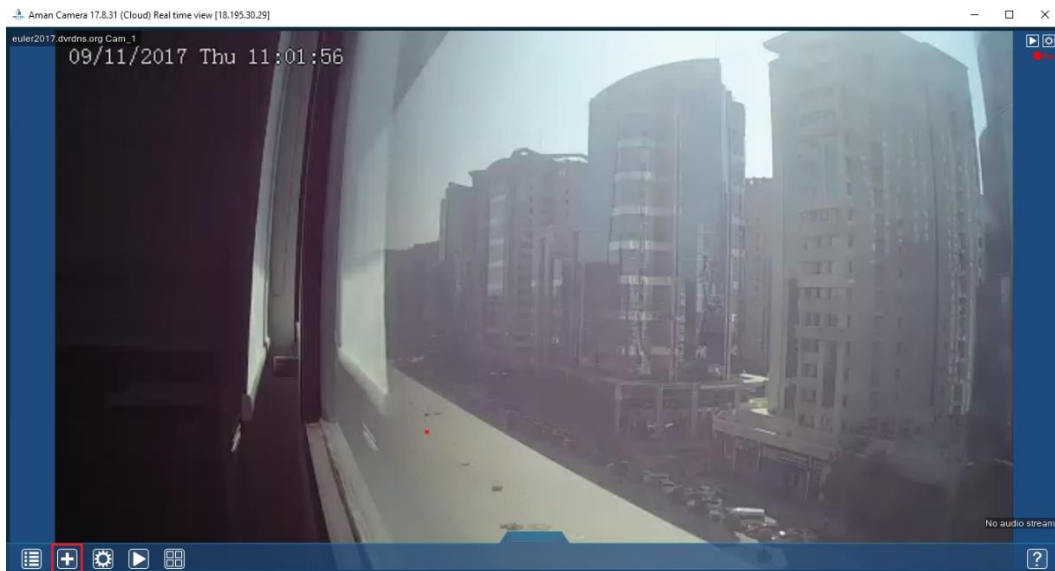
IP Address Setup

I. Network Setup

1. Create the static IP address of your network.
2. Open the HTTP port of you NVR.

II. Camera Setup

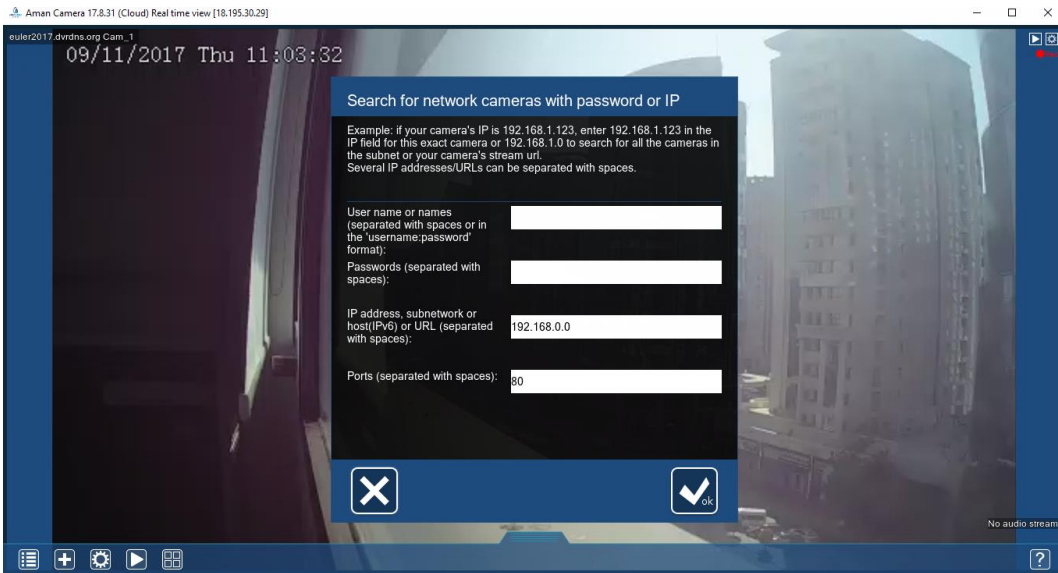
1. Open Aman Camera.
2. In the home screen, select “Add camera” option.



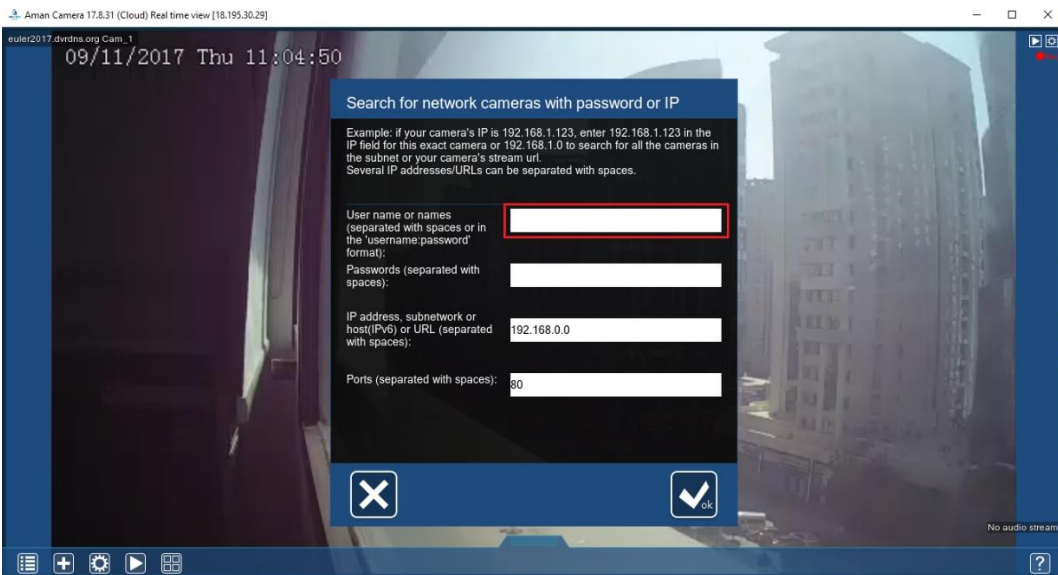
3. Select “Search by IP/Password”



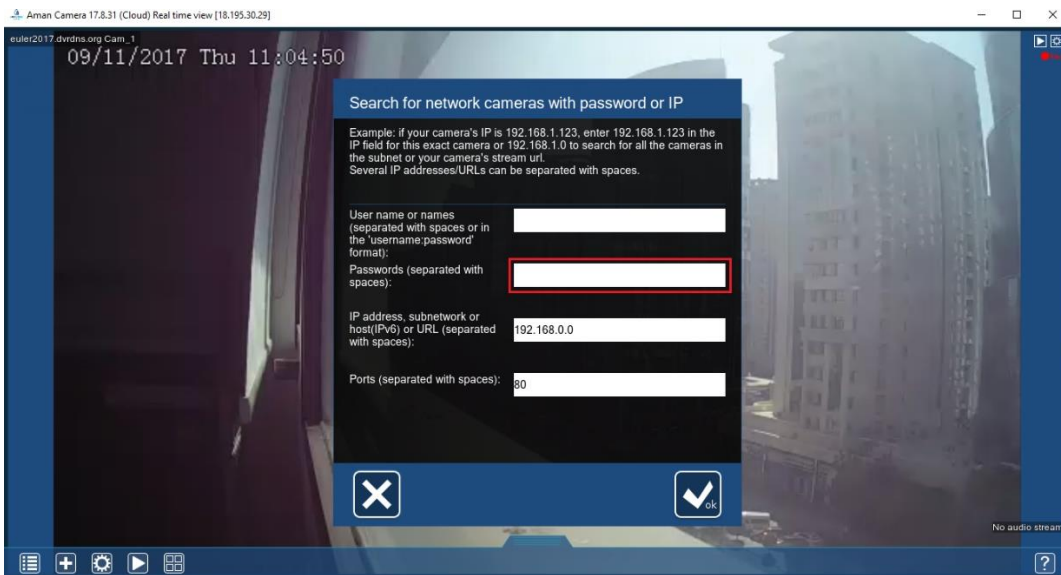
4. Pop-up window setting will appear.



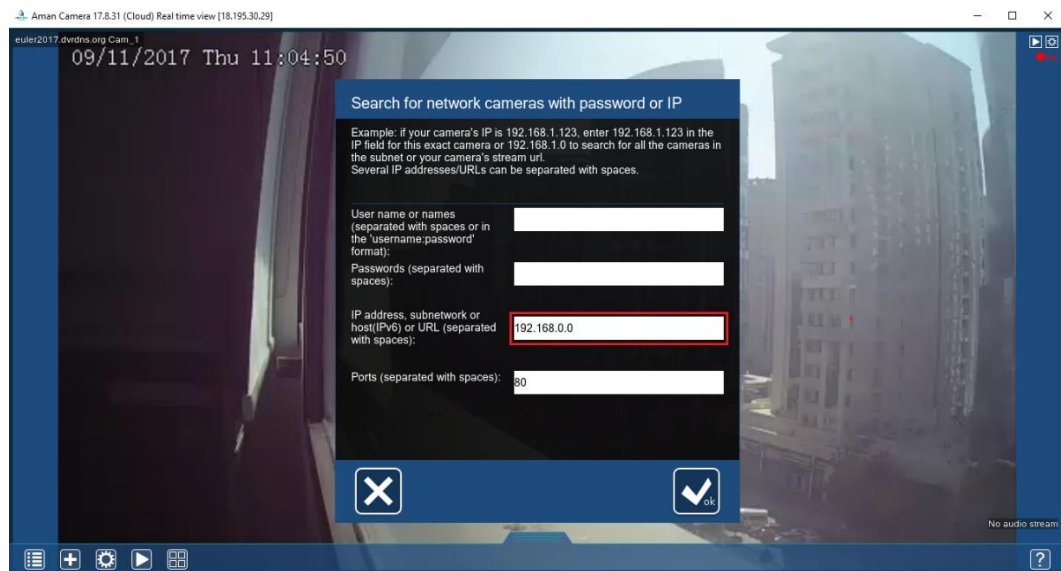
5. In the first bar, enter the username of the NVR.



6. In the second bar, enter the password of the NVR.



7. In the third bar, enter the IP address of your network. This IP address must be **static**. Static IP address is the permanent IP address assigned to your network.



8. In the last bar, enter the HTTP port of NVR. Please make sure that this port is open to access the camera.

