

ADDING CAMERAS

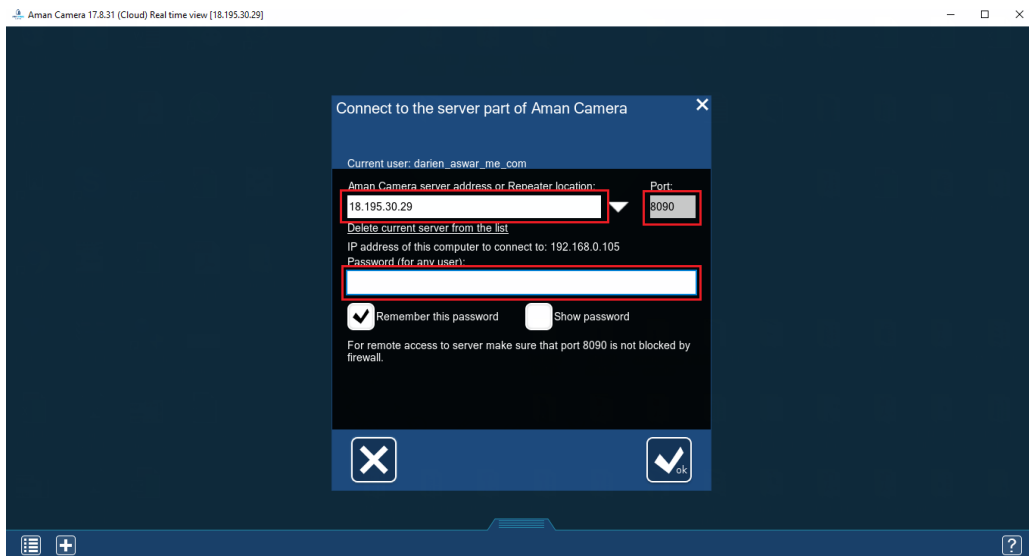
DDNS Setup

I. NETWORK SETUP

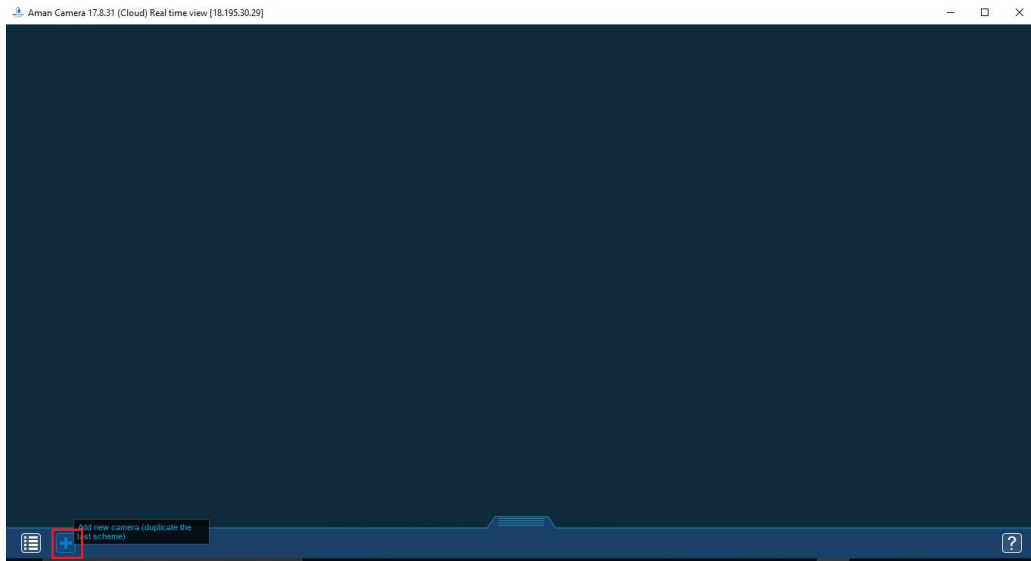
1. Create DDNS account for your network.
2. Once created, open ports **10090**, **8090**, and the **RTSP port of you NVR**. You will need these ports.

II. CAMERA SETUP

1. Download the latest version of Aman Camera from the website
2. Open Aman Camera.exe
3. It will automatically connect you to our server 18.195.30.29 with port 8090. Enter the password sent by the system.



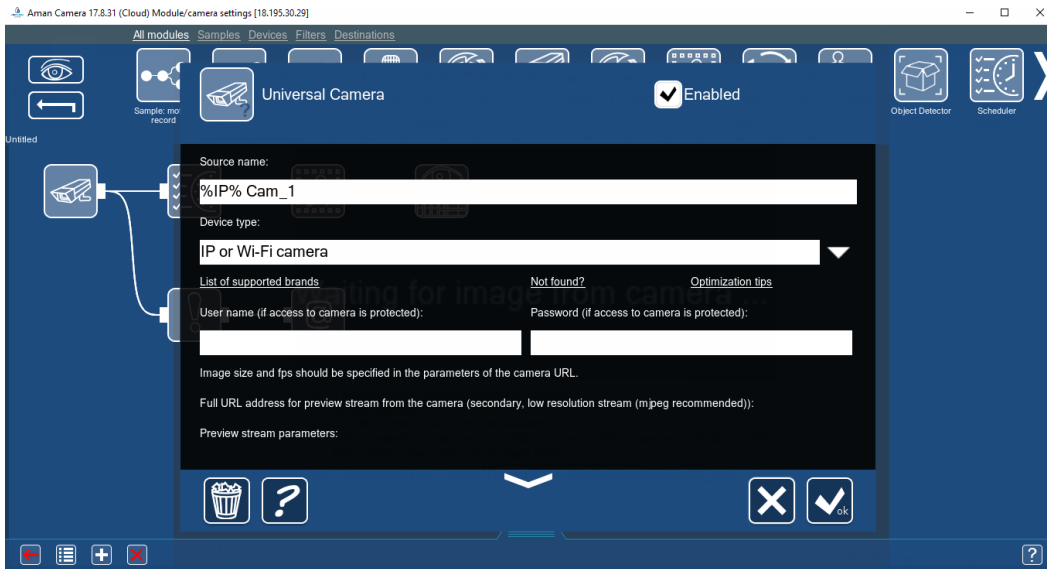
4. Once connected, select the + button in bottom panel.



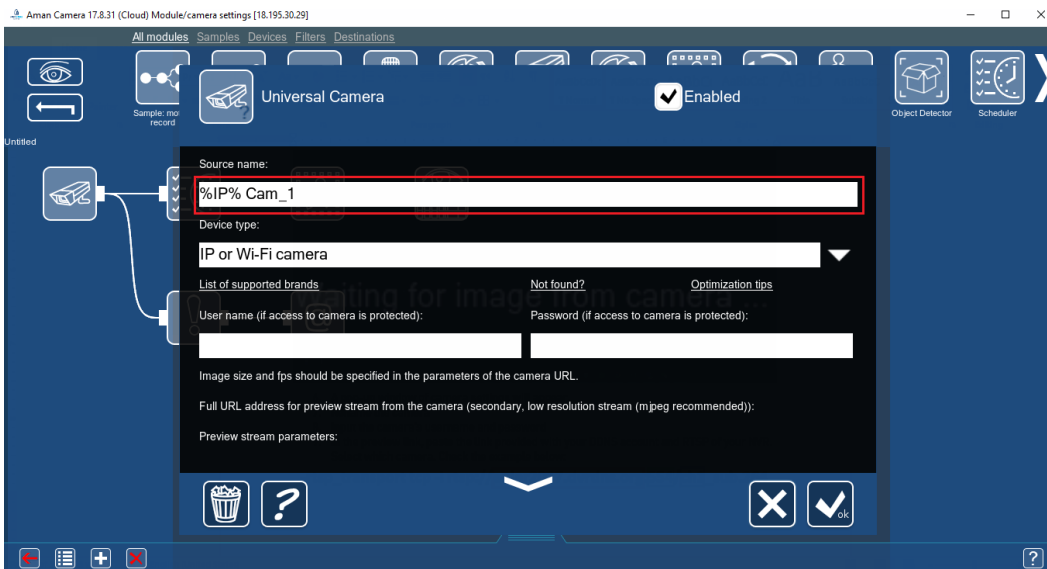
5. Select "Add cameras manually"



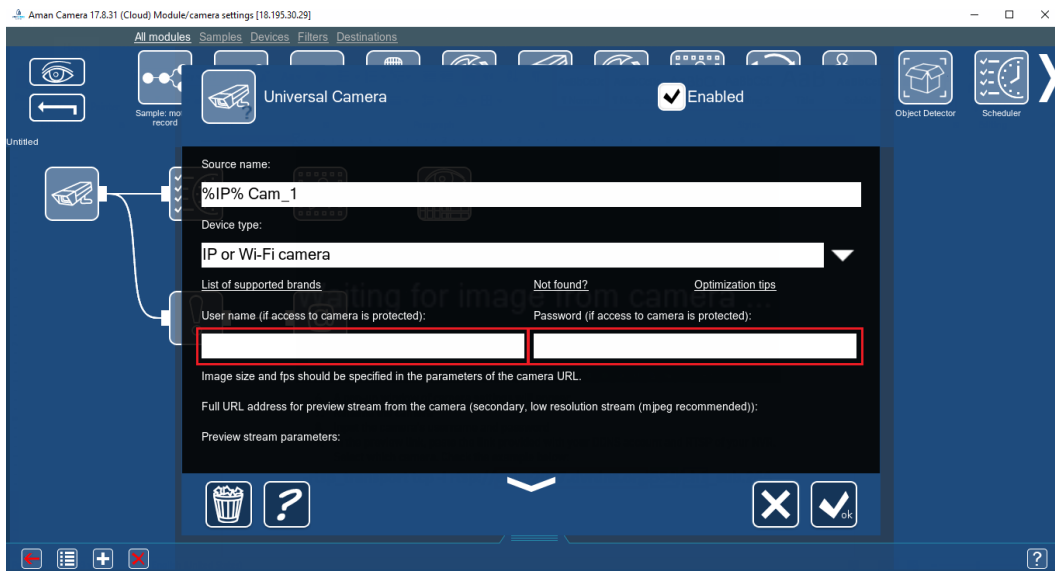
6. A pop-up window of camera settings will appear.



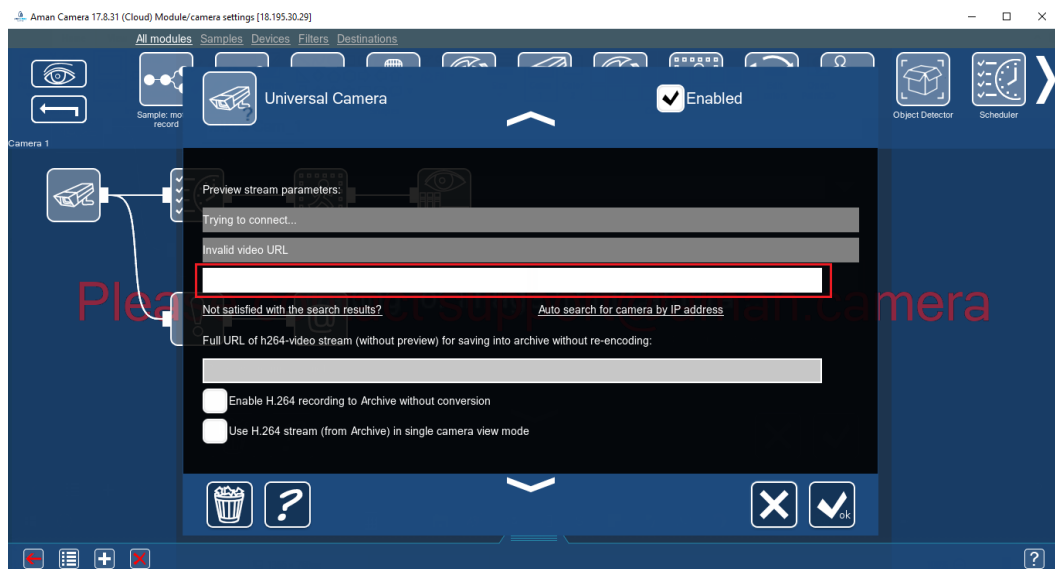
7. Rename the camera.



8. Input the camera's username and password



9. In the preview link, paste the link provided with your DDNS account and RTSP of your NVR. Select which camera.

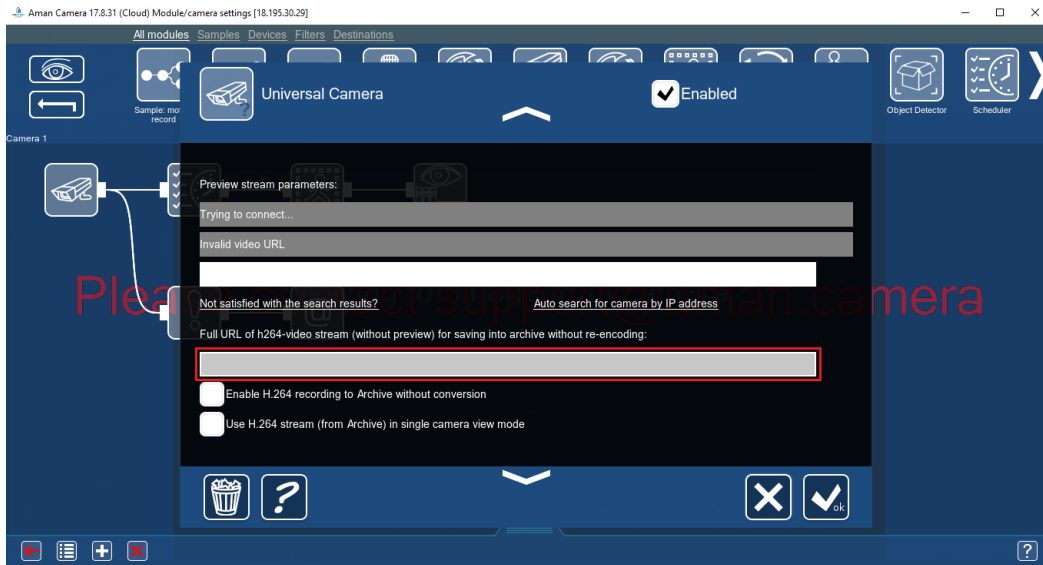


Check the example of URL below:

-rtsp_transport tcp -i rtsp://euler2017.dvrdns.org:554/ch1_sub.264

The red box is the DDNS, green box is the RTSP port of the NVR, and the blue box is the channel number where the camera is connected in the NVR.

10. In the recording link, copy the link you have added in the preview bar. Remove “_sub”



Example of URL:

-rtsp_transport tcp -i rtsp://euler2017.dvrDNS.org:554/ch2.264

The red box is the DDNS, green box is the RTSP port of the NVR, and the blue box is the channel number where the camera is connected in the NVR. Notice that “_sub” is removed from the link.

11. Once done, click the check mark and wait for the camera to load.

